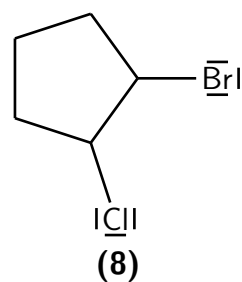
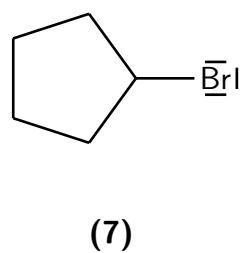
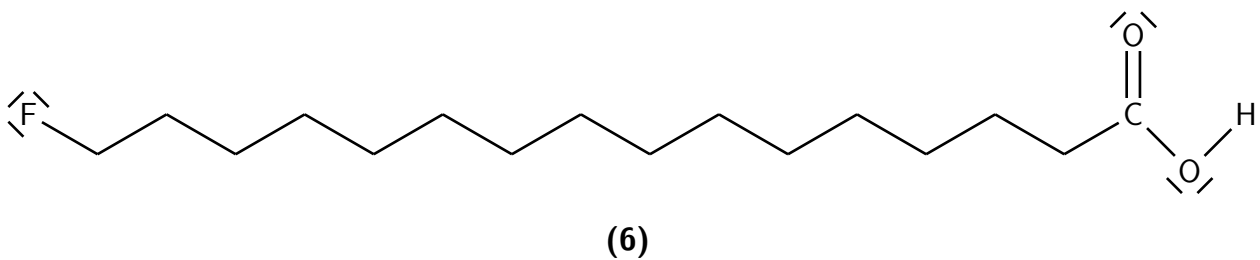
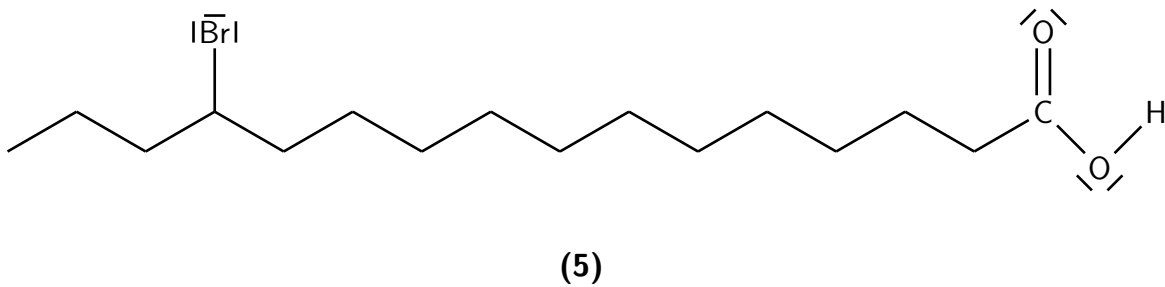
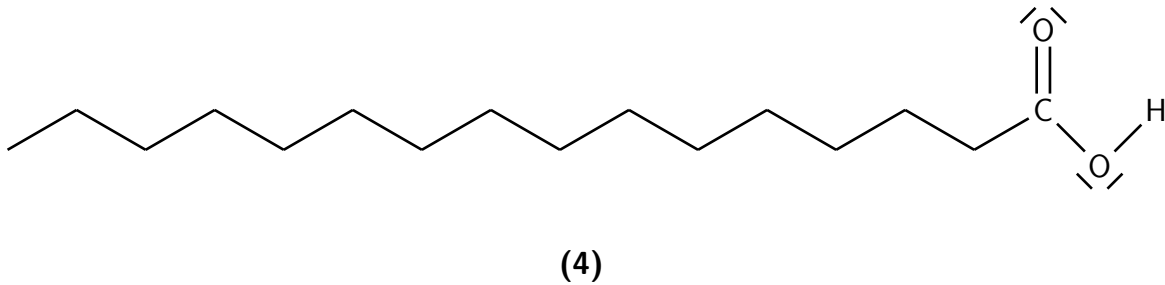
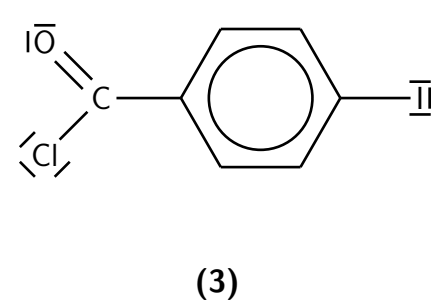
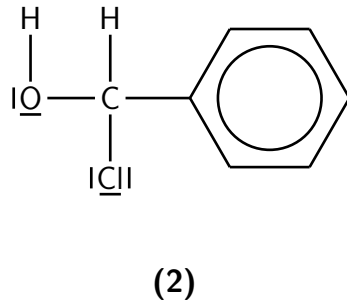
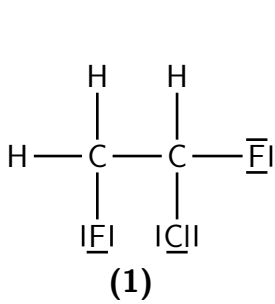


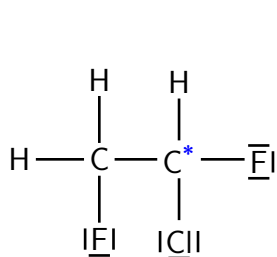
6.1 Chirale Moleküle

Entscheiden Sie, welche der Moleküle chiral sind. Markieren Sie alle Stereozentren.

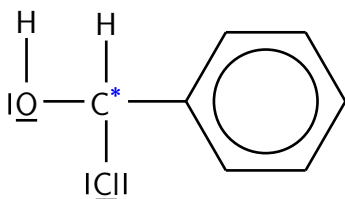


6.1 Chirale Moleküle -Lösung

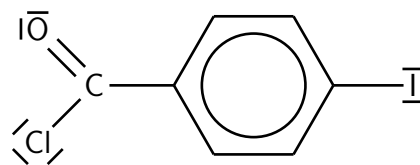
Entscheiden Sie, welche der Moleküle chiral sind. Markieren Sie alle Stereozentren.



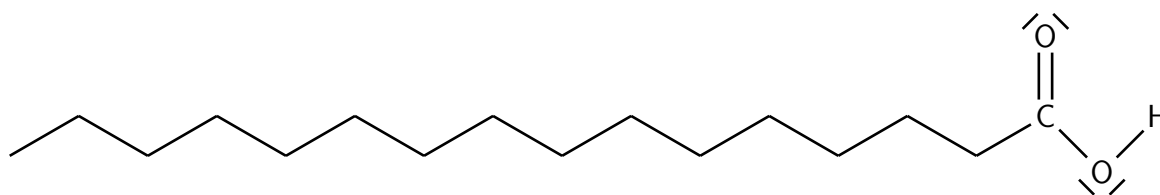
(1) chiral



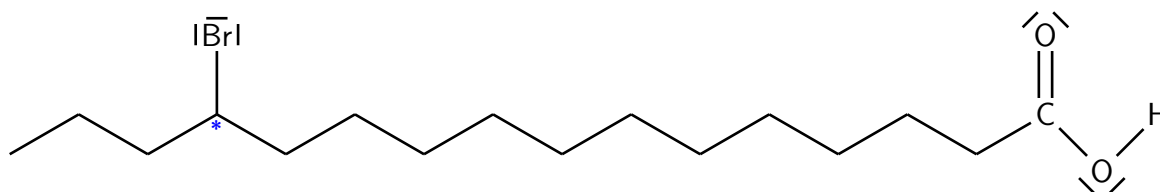
(2) chiral



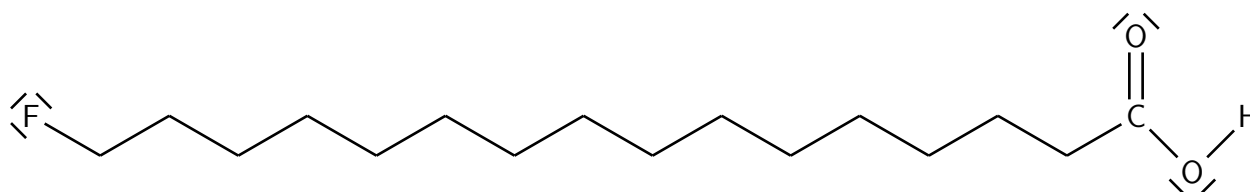
(3) achiral



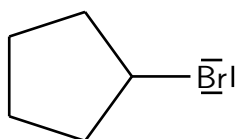
(4) achiral



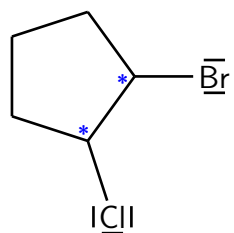
(5) chiral



(6) achiral



(7) achiral



(8) chiral